

## Judged Show

### Prizes:

1st Place \$150.00

2nd Place \$100.00

3rd Place \$50.00

### Exhibition

Show on display from

July 13 to September 7, 2019.

## Show Rules and Regulations

Artworks must be less than 3 years old and may not have previously won any Mid-Missouri Fine Arts Society award.

Up to two pieces per person, all mediums.

2D art may be no less than 8"x10" or larger than 18"x24" (image size) framed or gallery wrapped (no exposed staples) with secure hanger (no saw-tooth hangers).

Drop-off and pick-up dates should be respected. If you can't be present to deliver or retrieve your work, please have a friend who is able to help you stay on schedule. Please, consider how long your work will be displayed before you enter, early pick-ups are not recommended.

MMFAS may reject works that are inappropriate, over or under-sized, still wet, or entered late. Large turnouts may limit entries due to space available.

The Gallery is open 7 days a week from 10 a.m. until 5:00 p.m., except when the Visitor Center attendant needs to make deliveries. It's a good idea to call in advance, to be sure the gallery is open when you or your guests plan to visit. Washington Visit Center 636-239-7575.

## Attention

Registration form and entry fee  
due July 5, 2019.

Send to:

Betty Manhart

23 MacArthur St.

Washington, MO 63090

No entries will be accepted after this date.

Bring artwork July 13 from 9am to noon  
to the Washington Train Depot.



## Our Mission

The Mid-Missouri Fine Arts Society (MMFAS) began in 1974 to promote and contribute to the interest in fine arts. Members are active artists and art enthusiasts. Our Mission also includes encouraging the development of proven talent by aiding deserving students in the fine arts.

Artwork on cover by Judith Lasley and Veronica Brown.

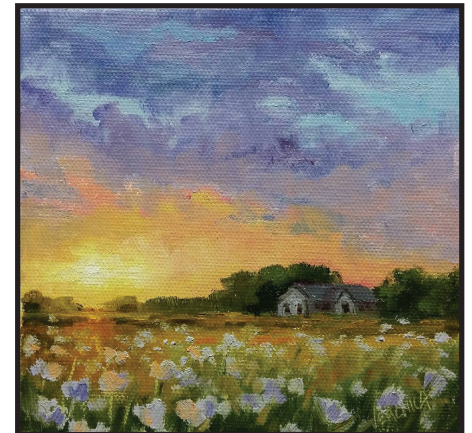
Mid-Missouri Fine Arts Society

# Annual Landscape Show

## July 13, 2019



Reception  
July 19 2019  
6pm to 7:30pm



Train Station Depot Gallery  
Washington, MO.

# Mid-Missouri Fine Arts Society

## Annual Landscape Competition & Show

Receiving artwork only on July 13 at 9:00 am to Noon  
at the Train Station Depot Gallery in Washington. MO.

Open to Members and General Public 18 or Older

Entry Fee: Non-Members \$30 - Members \$20

Limit two pieces per artist.

Make checks payable to MMFAS

**Entry form and fee due July 5, 2019.**

**Send to: Betty Manhart, 23 MacArthur St., Washington, MO 63090.**

Questions contact: Betty Manhart at 636-239-3157 or [bettyman@yhti.net](mailto:bettyman@yhti.net)

---

---

Name \_\_\_\_\_ Phone \_\_\_\_\_

Address \_\_\_\_\_

Email \_\_\_\_\_

Entry 1. \_\_\_\_\_

Medium \_\_\_\_\_ Size \_\_\_\_\_ Price \_\_\_\_\_

Entry 2. \_\_\_\_\_

Medium \_\_\_\_\_ Size \_\_\_\_\_ Price \_\_\_\_\_

---

---

### MMFAS Liability Statement

All artwork is entered at the artist's risk. All reasonable care will be taken with the artwork.

However, the MMFAS and the Train Depot will not assume any liability for loss or damage incurred while in possession. Artists wishing to insure their own works should arrange for their own private insurance with a reliable carrier.

Signature \_\_\_\_\_ Date \_\_\_\_\_